

LOGSTOR Installation instructions PertFlextra - Diffusion protection at couplings

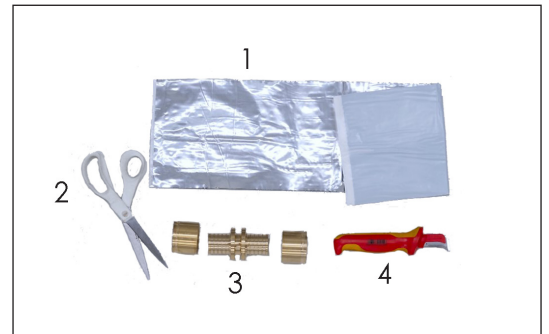


Installation Instructions

PertFlextra - Diffusion Protection at Couplings

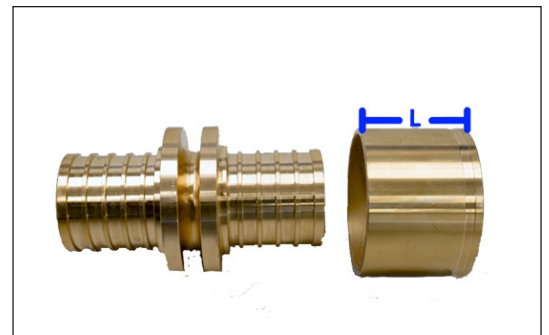
Materials

1. Alu-wrap
2. Scissors
3. Press coupling
4. The protection layer remover for removal of protection layer and aluminium diffusion barrier from PE-RT pipes

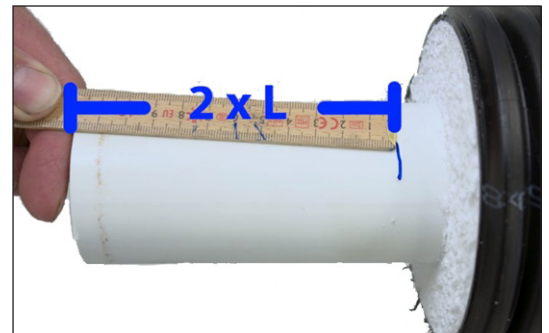


L measurement

Measure the length (L) of the press ring.



Multiply the length (L) by 2 and mark the length (2 x L) on the pipe.



Removing the protection layer and aluminium diffusion barrier

Remove the protection layer and aluminium diffusion barrier up to the marking with the protection layer remover.

They can be removed in several ways. However, it is essential that the safe protection layer remover is used, so the PE-RT pipe is not scratched.



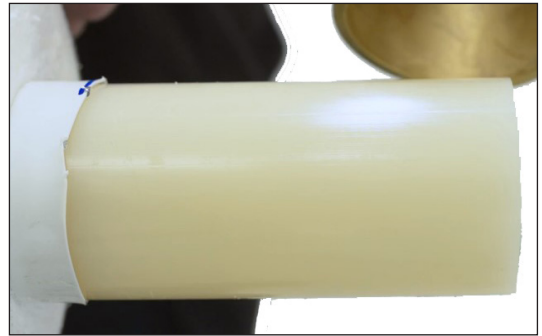
Installation Instructions

PertFlextra - Diffusion Protection at Couplings

Removing the protection layer and aluminium diffusion barrier, continued

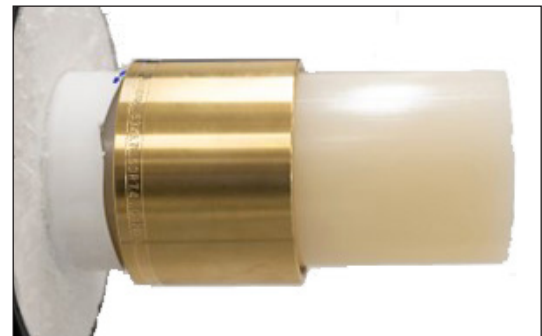


The inner pipe as well as the transition to the protection layer remain.



Installing press ring

Insert the press ring on the pipe.
Note! The text on the press ring must face the foam side.



Installation Instructions

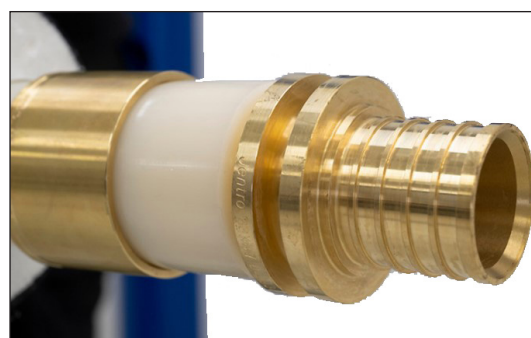
PertFlextra - Diffusion Protection at Couplings

Expanding the pipe end

Expand the pipe with the expansion tool for Jentro couplings.

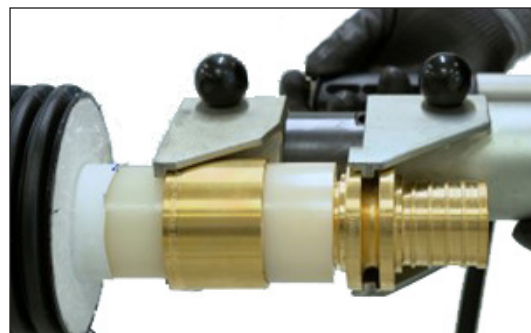


Immediately after, insert the supporting bush into the pipe end.

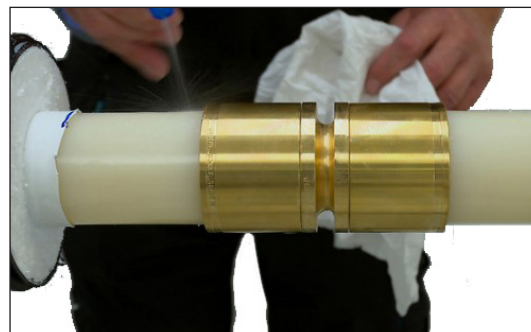


Pressing the coupling

Using the press tool for Jentro couplings the press ring and supporting bush are pressed tightly together.



Repeat the process at the other pipe end.



Installation Instructions

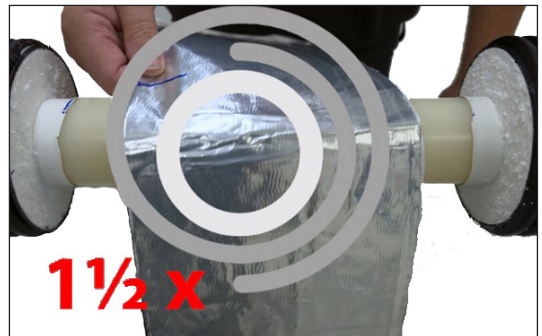
PertFlextra - Diffusion Protection at Couplings

Installing alu-wrap

Now measure the length of the alu-wraps.



The length must be approx. 1 ½ times the pipe circumference.



Clean the entire area with alcohol before installing the alu-wraps.



Place the first alu-wrap over the protection layer and the coupling.



Installation Instructions

PertFlextra - Diffusion Protection at Couplings

Installing alu-wrap, continued

The second alu-wrap is placed on the opposite protection layer and the first alu wrap.

Creases in the alu wrap are squeezed out.



Sealing of the coupling area is complete.

The area is now ready for installation of a casing joint.



Contact details

Denmark

LOGSTOR Denmark Holding ApS
Danmarksvej 11 | DK-9670 Løgstør

T: +45 99 66 10 00
E: logstor@kingspan.com



For the product offering in other markets please contact your local sales representative or visit www.logstor.com

Care has been taken to ensure that the contents of this publication are accurate, but Kingspan Limited and its subsidiary companies do not accept responsibility for errors or for information that is found to be misleading. Suggestions for, or description of, the end use or application of products or methods of working are for information only and Kingspan Limited and its subsidiaries accept no liability in respect thereof.

To ensure you are viewing the most recent and accurate product information, please scan the QR code directly above.

